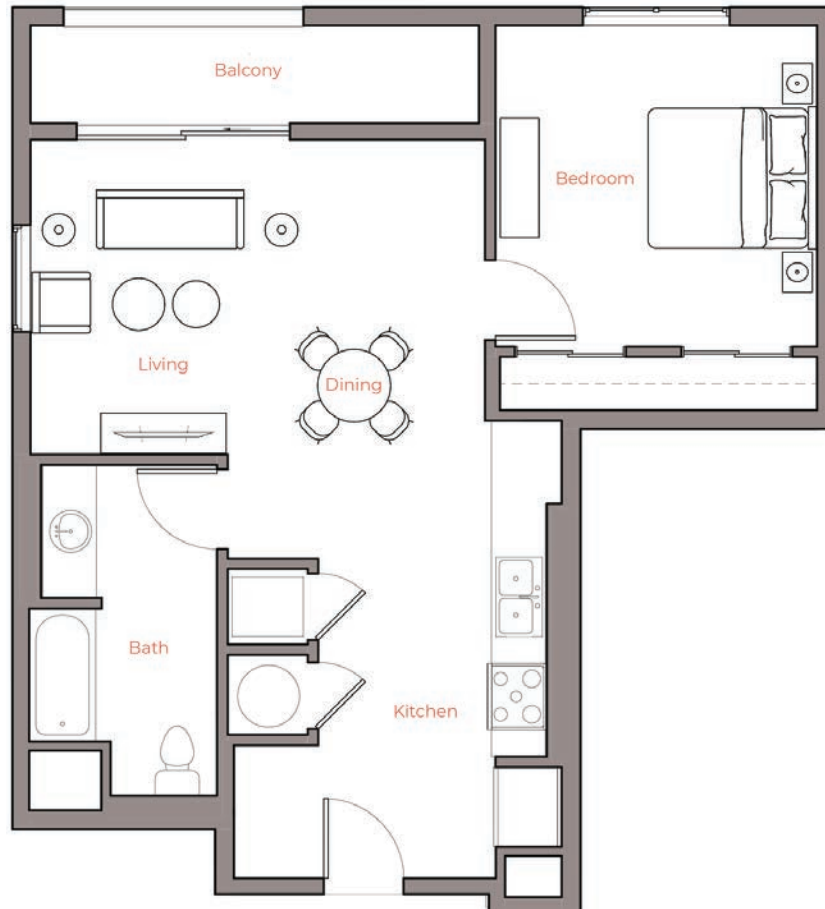


1C

1 BED / 1 BATH

690

SQ. FT.



EDGEWAY

Downtown Bellflower

9735 Oak St. | Bellflower, CA 90706

www.liveatedgeway.com

Floor plans are artist's rendering. All dimensions are approximate. Actual product and specifications may vary in dimension or detail. Not all features are available in every apartment. Prices and availability are subject to change. Please see a representative for details.